

Top Stories This Week

- RBI reduces repo rate by 25 basis points to 7.25%
- SBI cuts base rate by 15 basis points to 9.7 percent from 9.85 percent effective June 8
- Sun Pharma Q4 Cons Net Profit Down 44% At ` 888 Cr Vs ` 1,587 Cr (YoY). Cons Total Income Up 51.7% At ` 6,157 Cr Vs ` 4,059 Cr (YoY)
- BEML Q4: Net Profit At ` 169 Cr Vs ` 63.9 Cr (YoY). Total Income At ` 1,279.3 Cr Vs ` 779.6 Cr (YoY)
- L&T Q4 Cons Net Profit At ` 2,069.6 Cr Vs ` 2,840.4 Cr (YoY). Cons Net Sales Up 3.7% At ` 28,022.6 Cr Vs ` 27,024.1 Cr (YoY)
- May Auto Sales: Tata Motors - Total sales up 5 percent at 39,496 units versus 37,538 units (YoY)
- May Auto Sales: TVS Motor -Total sales up 6 percent at 2.2 lakh units versus 2.07 lakh units (YoY)
- Reliance Industries and Pioneer sell shale gas asset for USD 2.5 billion in a US company.
- Lupin , Cipla bid for UCB's US generic drug business valued at USD 1 billion: Reports
- NMDC April-May Iron Ore Production At 4.14 mt Vs 4.94 mt (YoY). April-May Iron Ore Sales At 4.54 mt Vs 5.74 mt (YoY)

Weekly Indices Change

Index	Close	P. Close	Chg. (%)
SENSEX	26768	27828	-3.81
NIFTY	8114	8433	-3.78
MIDCAP	10353	10716	-3.39
SMLCAP	10851	11280	-3.80
METAL	9458	9728	-2.78
OIL&GAS	9530	9643	-1.17
AUTO	18099	19079	-5.14
TECK	6005	6122	-1.91
BANKEX	20190	21511	-6.14
IT	10705	10910	-1.88
FMCG	7492	7847	-4.52
HC	15912	16900	-5.85
PSU	7589	7815	-2.89
CD	10258	10666	-3.83
POWER	2018	2069	-2.46
CG	16808	16802	0.04
REALTY	1410	1537	-8.26

Global Indices

DOW	17849	18010	-0.89
NASDAQ	5068	5070	-0.04
FTSE	6804	6984	-2.58
NIKKEI	20460	20563	-0.50
HANGSENG	27260	27424	-0.60

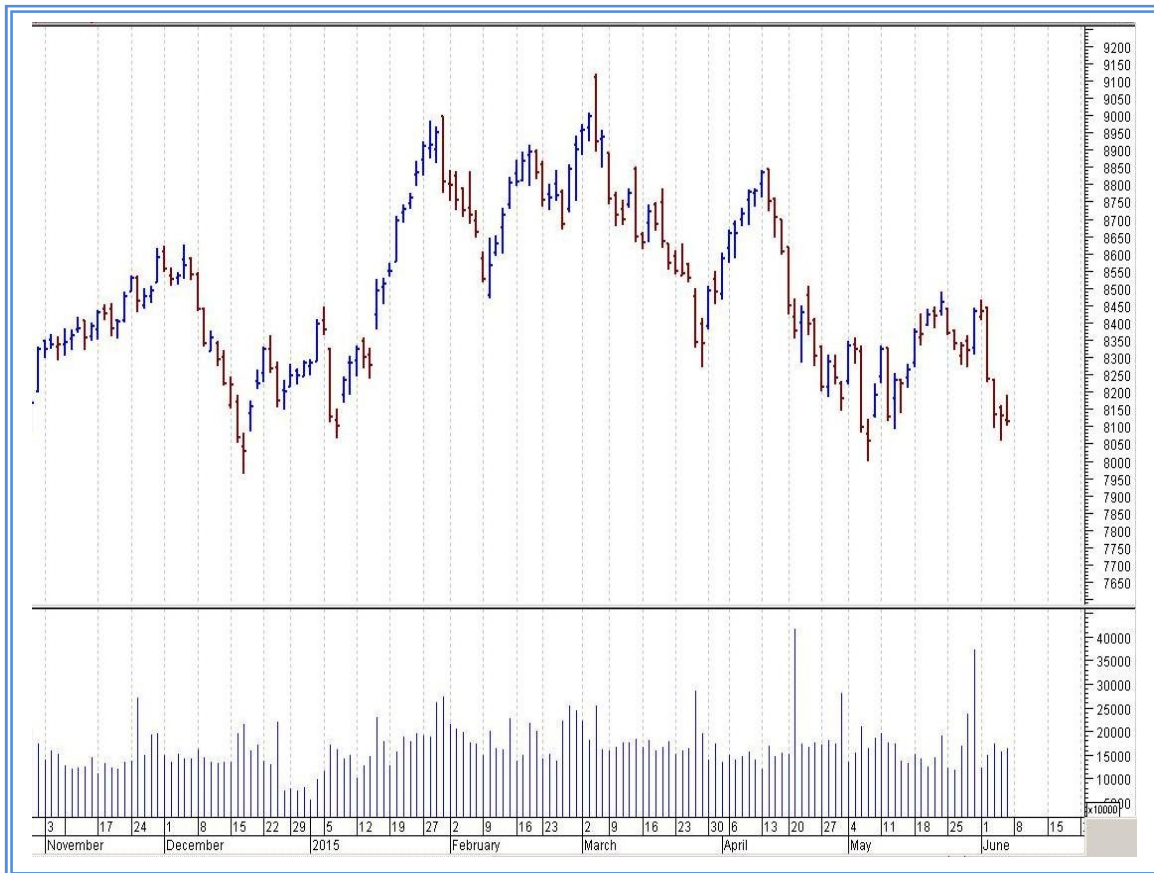
Top Gainers Weekly

Scrip	Price	% Chg
Praj Industries	86.70	47.32
BEML Ltd.	1186.10	25.53
Kwality	50.45	17.60
ABG Shipyard	167.25	14.52
RPG Life Sciences	174.90	14.50

Top Losers Weekly

Scrip	Price	% Chg
Unitech Ltd.	8.95	36.30
Adani Power Ltd.	31.50	21.05
Jet Airways	305.25	18.00
Reliance Power Ltd	44.75	17.44
Jindal St & Pwr	107.10	17.36

Nifty Corner



Support & Resistance						
S3	S2	S1	Nifty	R1	R2	R3
7900	8000	8050	8114	8250	8350	8400
Moving Averages						
20DMA		50DMA		100DMA		200DMA
8305		8395		8555		8345

Market Commentary

Key benchmark indices witnessed a sharp slide in the week ended Friday, 5 June 2015, on worries of weak monsoon rains. The barometer index, the S&P BSE Sensex, fell below the psychological 27,000 level. The Sensex fell in four out of five trading sessions in the week ended Friday, 5 June 2015. For the next week Nifty likely to trade in the range between 8350 – 8400 in the upper side and 8000 – 7900 in the lower side.

Stocks at 52 wk High

Scrip	Cmp
BEML	1186.10
BPCL	855.70
Britannia	2709.45
Mangalam Drugs	62.65
Praj Industries	86.70

Stocks at 52 wk Low

Scrip	Cmp
Bank of India	180.85
Canara Bank	309.30
ITC	304.30
ONGC	308.20
Tata Steel	311.10

FII Activity

Date	Figures in crore
01/06	113.47
02/06	-594.14
03/06	-727.61
04/06	511.90
05/06	-550.29
NET	-1246.67

DII Activity

Date	Figures in crore
01/06	49.34
02/06	271.64
03/06	412.66
04/06	772.04
05/06	879.5
NET	2385.18

Weekly Stock Idea

Scrip	B/S	Cmp	Tgt
AMTEKAUTO	B	148	165
MANGALAM	B	62	74
TATASTEEL	B	311	335
SBIN	B	257	280
RELIANCE	B	907	945

Buy on dips & Sell on rise with Stop-loss of 3%

Volume Breakout Stocks

Scrip	Cmp
RPG Life	174.90
Gati	168.70
Titagarh Wagons	100.20
Elder Pharma	72.80
ABG Shipyard	167.25

Week Ahead

MAJOR RESULTS/AGM MEETING THIS WEEK:

10 JUNE: SUBEX, ORIENTBANK, POLARIS, JHS, PAPERPROD

11 JUNE: VIDEOIND, MINDTREE

12 JUNE: REIAGROLTD, TULSI, REISIXTEN, AUSTRAL, RALLIS, UNITEDBNK, VIJAYABANK

VISIT US AT: WWW.INDIRATRADE.COM

Disclaimer

This report is for private circulation within the Indira Group. This report is strictly confidential and for information of the selected recipient only and may not be altered in any way, transmitted to, copied or distributed, in part or in whole, to any other person or to the media or reproduced in any form. This report should not be construed as an offer or solicitation to buy or sell any securities or any interest in securities. It does not constitute a personal recommendation or take into account the particular investment objectives, financial situations, or any such factor. The information, opinions estimates and forecasts contained here have been obtained from, or are based upon, sources we believe to be reliable, but no representation of warranty, express or implied, is made by us to their accuracy or completeness. Opinions expressed are our current opinions as of the date appearing on this material only and are subject to change without notice.